

FOR LEASE

250 Main St., South, Southbury CT 06488

MATTHEWS COMMERCIAL PROPERTIES

PROFESSIONAL SPACE LOCATED AT 250 MAIN ST, SOUTHBURY



FORMER MEDICAL OFFICE / GROUND LEVEL

- Unit G - 918 SF+/-
- Lease Rate: \$15.00 PSF plus Nets of \$6.10 PSF
- Main Street location with great parking
- Owner on site
- Great mixed use plaza
- Other tenants at this plaza include Dentists, Massage Therapist, Bakery, Hair Salon, Nail Salon, Barber Shop, Boutique

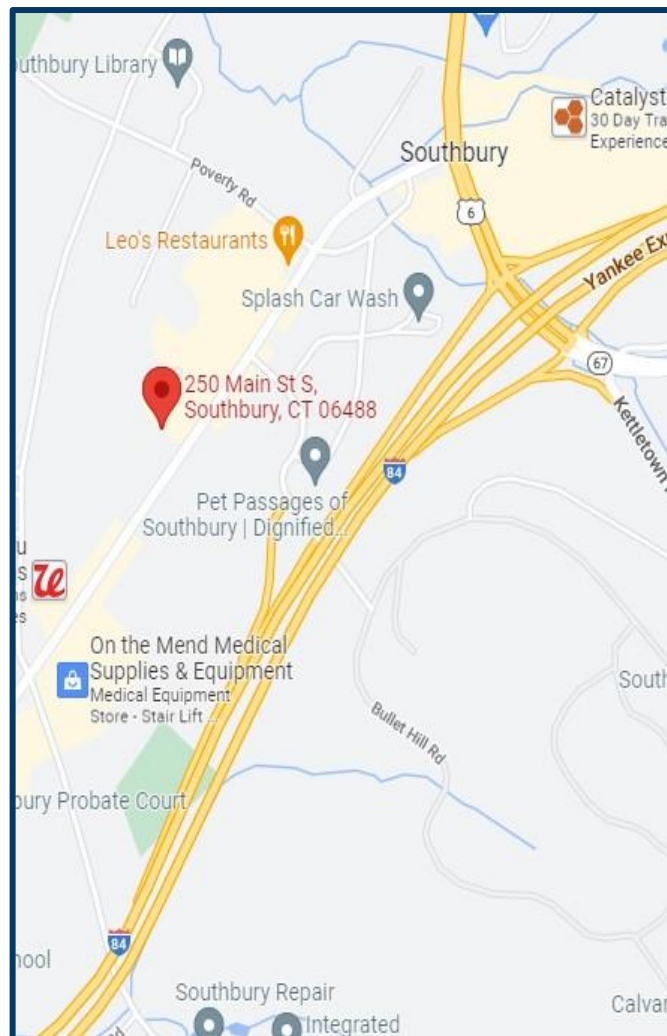
Contact:
GERRY MATTHEWS
Office: 203-753-5800
matthewscre@gmail.com

FOR LEASE

250 Main St., South, Southbury CT 06488

MATTHEWS COMMERCIAL PROPERTIES

Total SF	14,565 SF+/-
Number of Floors	2
Available SF	918
Exterior Construction	Vinyl
Interior Construction	Finished
Ceiling Height	9'
Roof	Architectural Shingles
Heat Source/ Type	Electric Heat Pumps
Parking	In-Common
A/C	Central
Sewer	Septic
Water	Town Water
Electric	100 Amps per Unit
Interstate/Distance	I-84 / 2 miles
Lease Rate	1st Level / Unit G \$15.00 PSF plus Nets of \$6.10 PSF

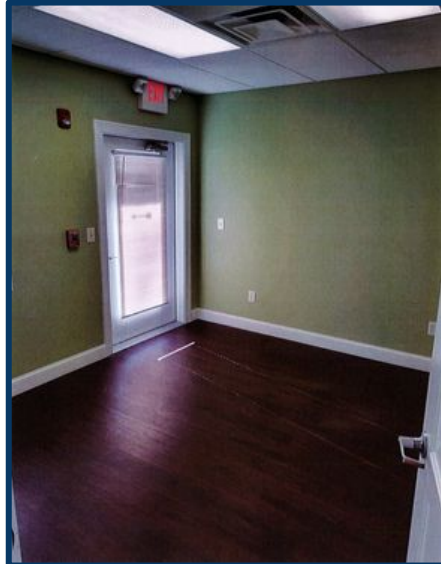
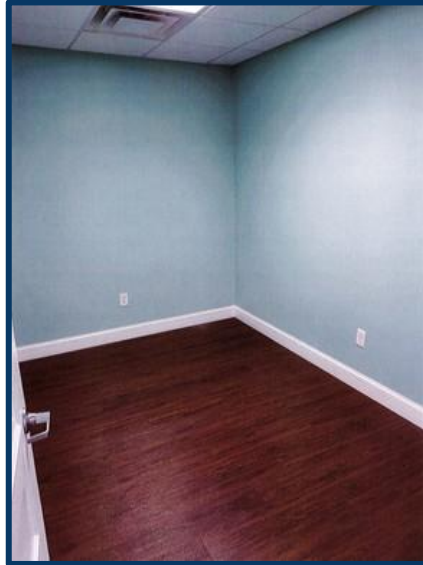
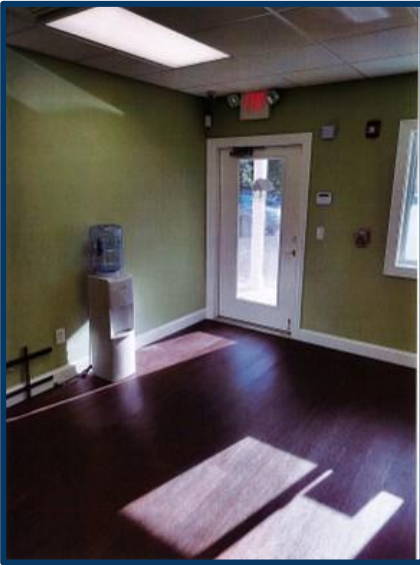


CONTACT: GERRY MATTHEWS 203-753-5800

MATTHEWS COMMERCIAL PROPERTIES LLC
819 Straits Tpke, Suite 3B
Middlebury, CT 06762
matthewscommercial.com

FOR LEASE

250 Main St., South, Southbury CT 06488



CONTACT: GERRY MATTHEWS 203-753-5800

MATTHEWS COMMERCIAL PROPERTIES LLC
819 Straits Tpke, Suite 3B
Middlebury, CT 06762
matthewscommercial.com

FOR LEASE

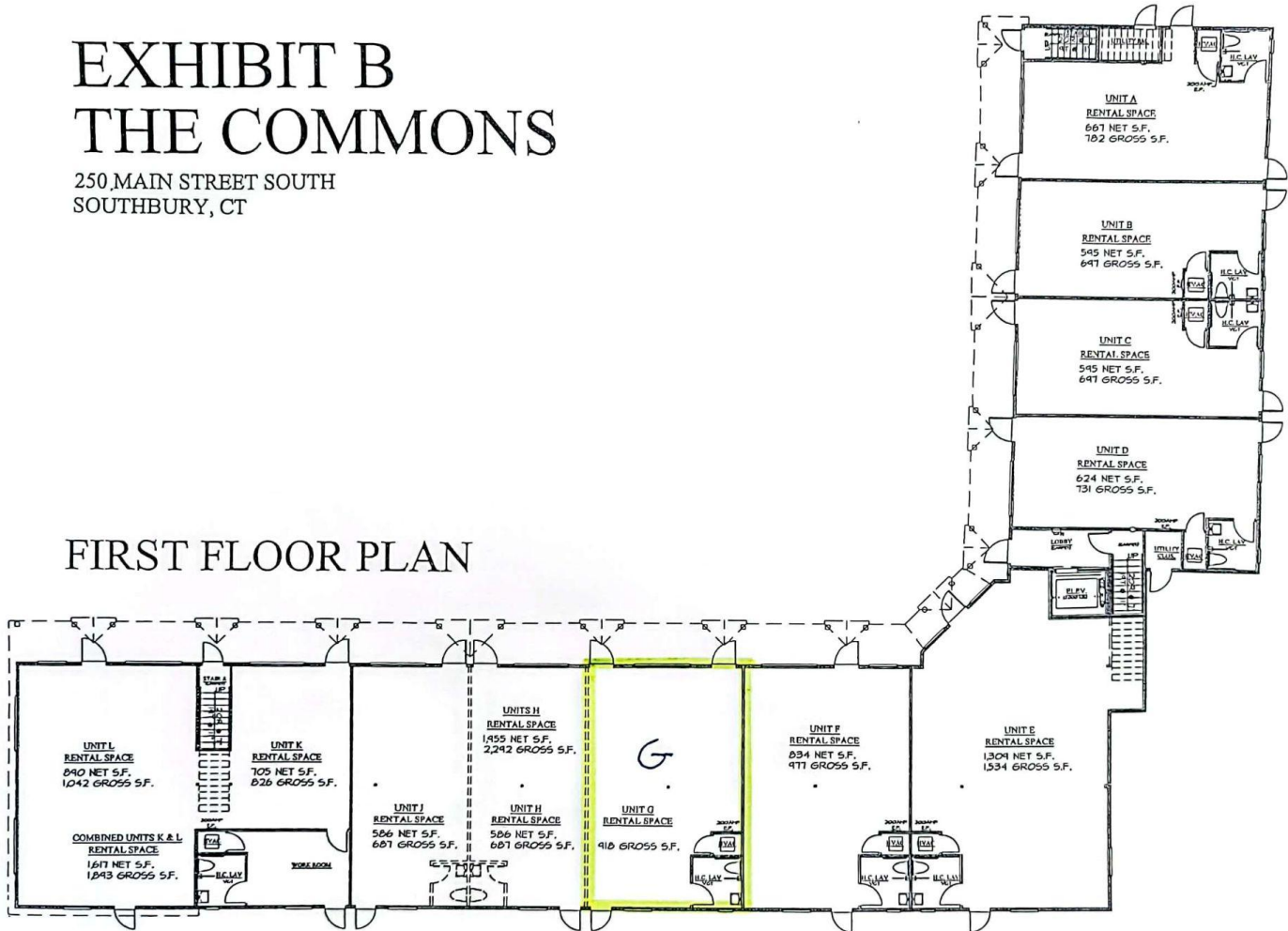
250 Main St., South, Southbury CT 06488

MATTHEWS COMMERCIAL PROPERTIES

EXHIBIT B THE COMMONS

250 MAIN STREET SOUTH
SOUTHURY, CT

FIRST FLOOR PLAN



CS
UNITS WITH VARIOUS

MATTHEWS COMMERCIAL PROPERTIES LLC

819 Straits Tpke, Suite 3B

Middlebury, CT 06762

matthewscommercial.com

CONTACT: GERRY MATTHEWS 203-753-5800