

# **FOR SALE or GROUND LEASE**

## **659 Middlebury Road, Middlebury, CT**

MATTHEWS COMMERCIAL PROPERTIES



- **2.64 Acres**
- **Previously Approved for 7,500 SF+/- Office Building**
- **City Water / Sewer**
- **Located in the Center of Middlebury's Retail Zone**
- **Rt 64**
- **Traffic Count = 10,000 Vehicles per day**
- **Sales Price = \$449,900.00**
- **Ground Lease = \$50,000.00 per year plus Taxes**
- **Excellent Access to I-84**

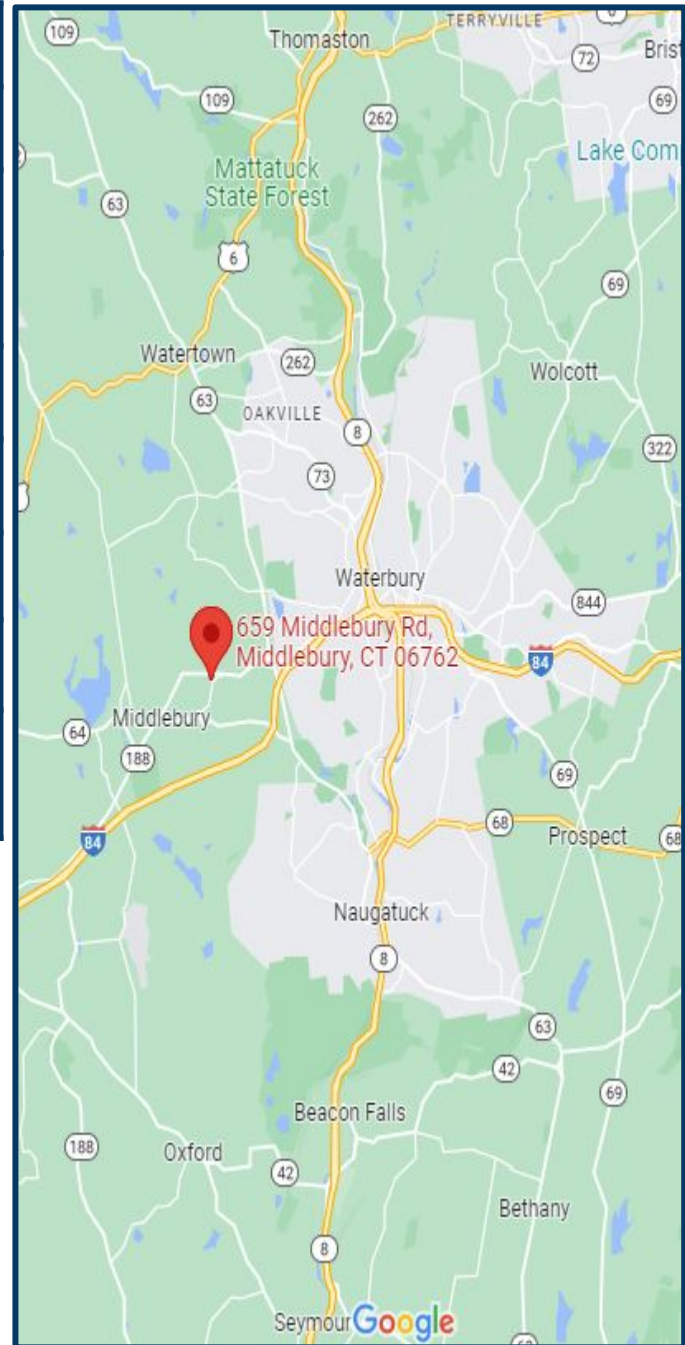
**Contact:**  
**GERRY MATTHEWS**  
**Office: 203-753-5800**  
**matthewscre@gmail.com**

# FOR SALE or GROUND LEASE

## 659 Middlebury Road, Middlebury, CT

MATTHEWS COMMERCIAL PROPERTIES

<b>Sewer</b>	<b>Yes</b>
<b>Water</b>	<b>City</b>
<b>Electric</b>	<b>Eversource</b>
<b>Total Acres</b>	<b>2.64</b>
<b>Zoning</b>	<b>P.O. 40</b>
<b>Interstate Distance</b>	<b>I-84 / 1 mile</b>
<b>State Route Distance</b>	<b>Route 64/located on</b>
<b>Sales Price</b>	<b>\$449,900.00</b>
<b>Ground Lease Rate</b>	<b>\$50,000 per year plus Taxes</b>



**CONTACT: GERRY MATTHEWS 203-753-5800**

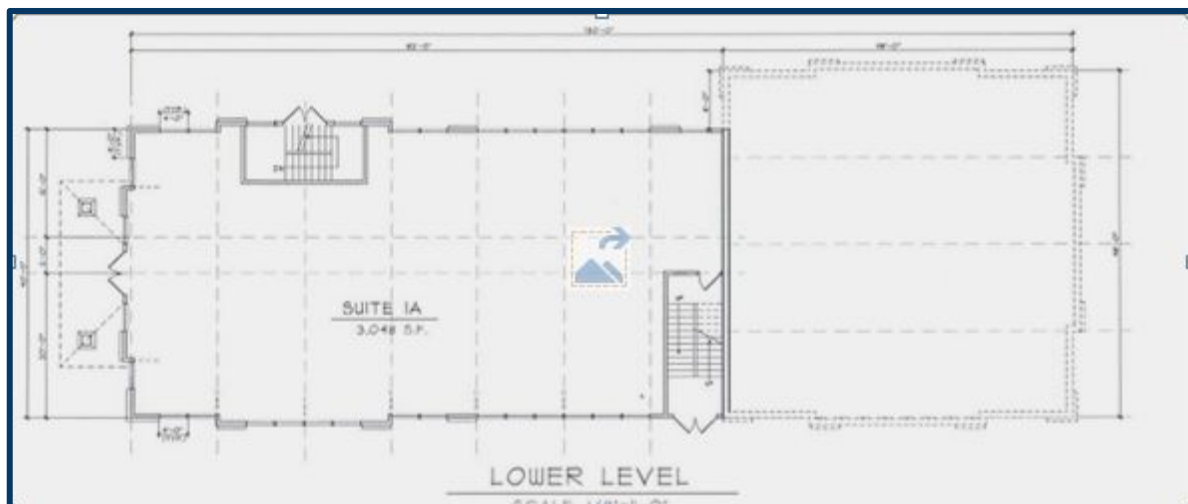
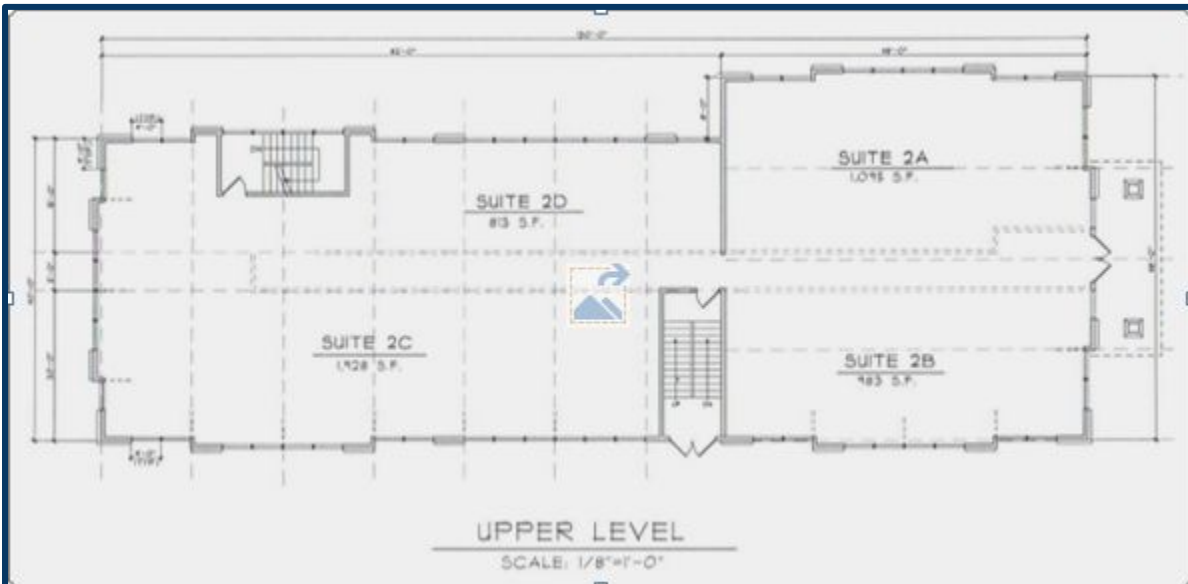
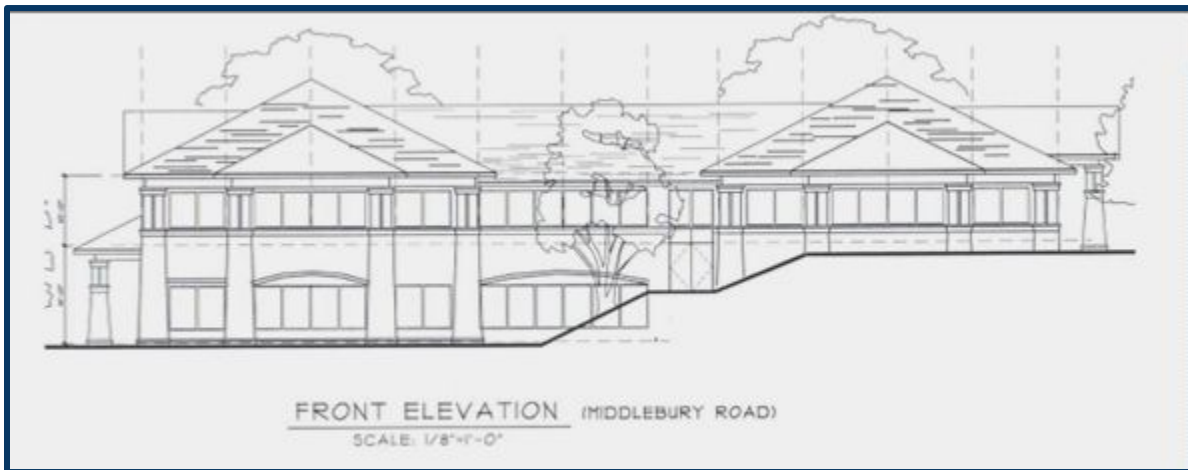
**MATTHEWS COMMERCIAL PROPERTIES LLC**  
819 Straits Tpke, Suite 3B  
Middlebury, CT 06762  
[matthewscommercial.com](http://matthewscommercial.com)



# FOR SALE or GROUND LEASE

## 659 Middlebury Road, Middlebury, CT

MATTHEWS COMMERCIAL PROPERTIES



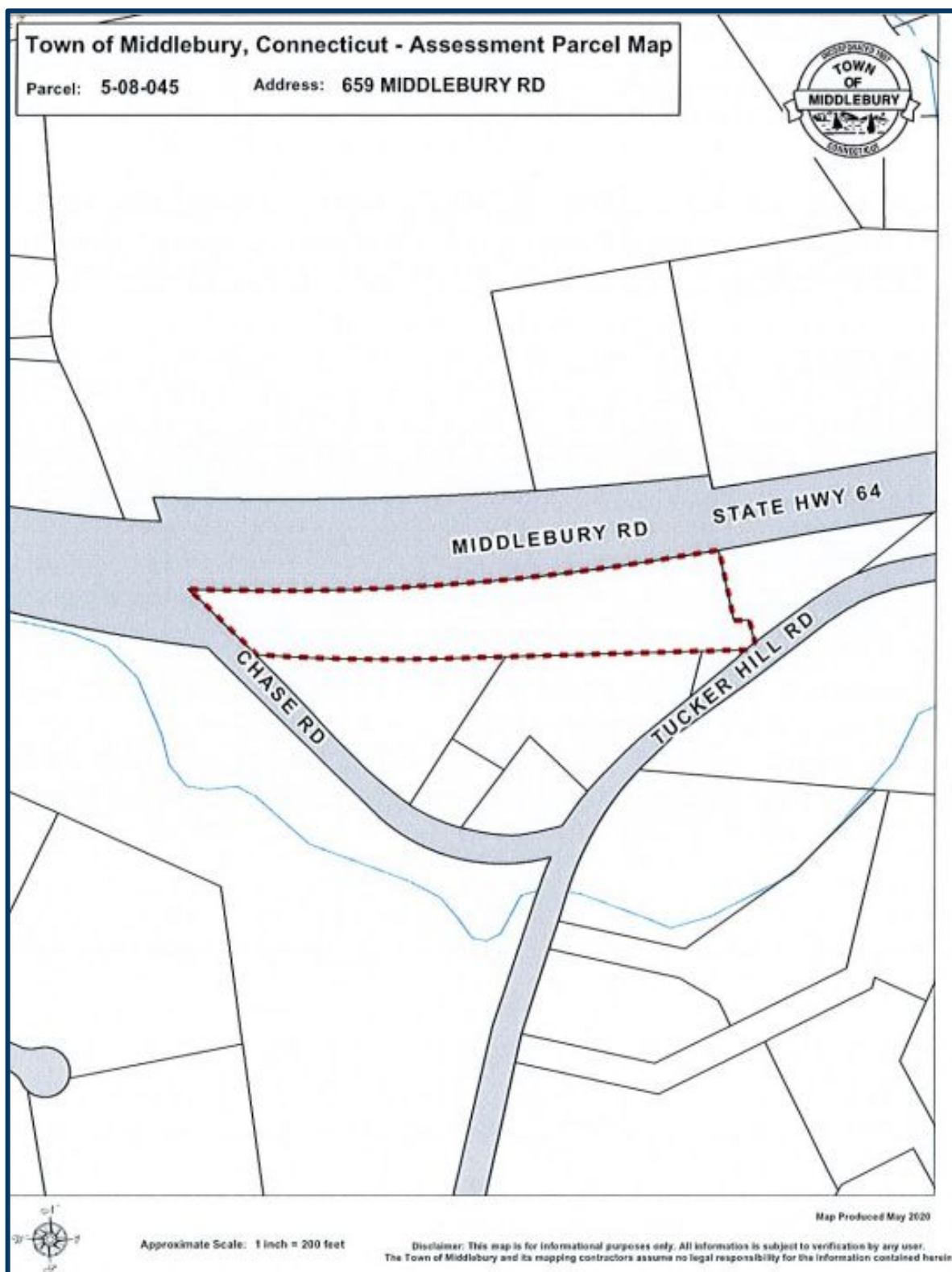
CONTACT: GERRY MATTHEWS 203-753-5800

MATTHEWS COMMERCIAL PROPERTIES LLC  
819 Straits Tpke, Suite 3B  
Middlebury, CT 06762  
[matthewscommercial.com](http://matthewscommercial.com)

# FOR SALE or GROUND LEASE

## 659 Middlebury Road, Middlebury, CT

MATTHEWS COMMERCIAL PROPERTIES



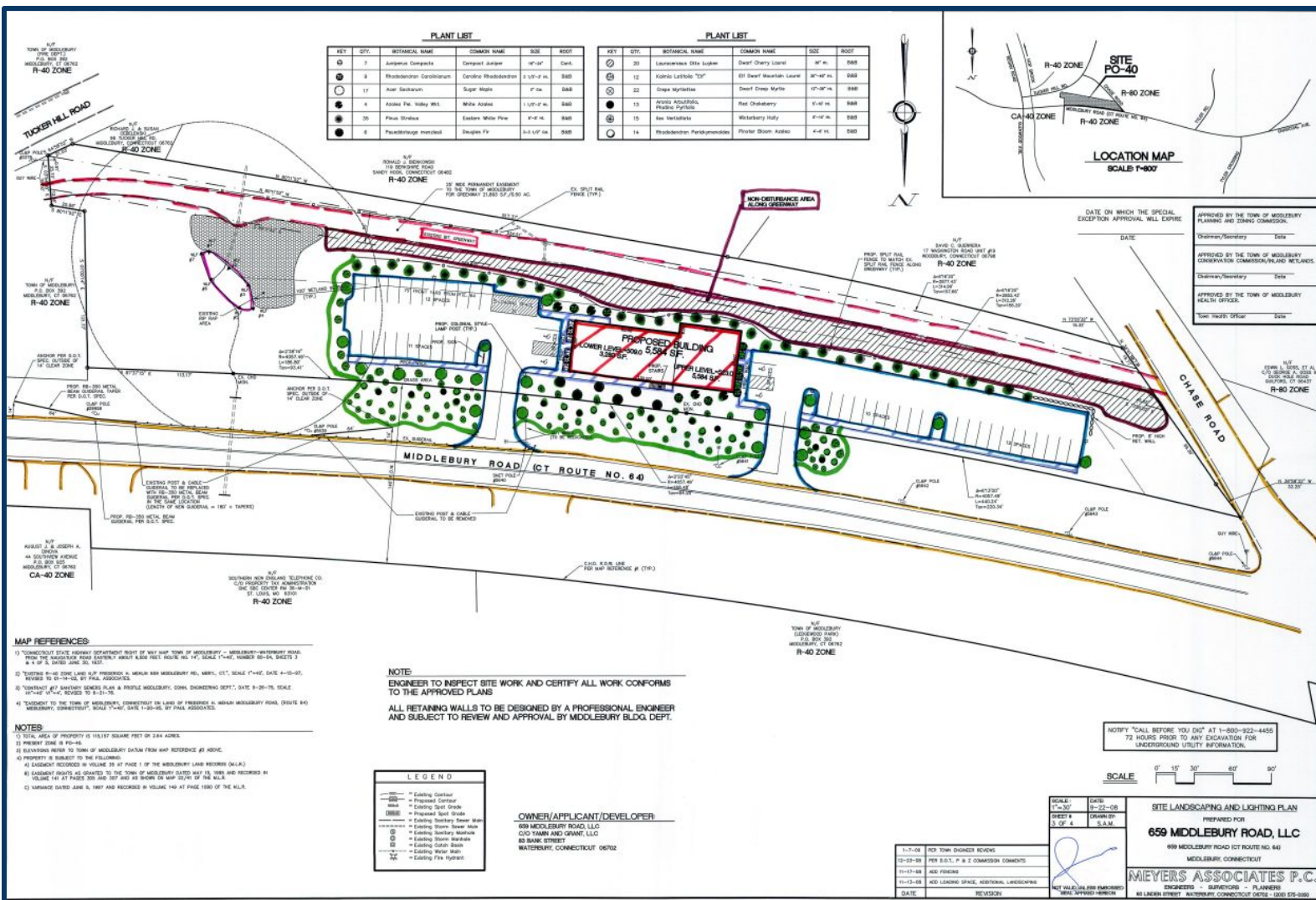
CONTACT: GERRY MATTHEWS 203-753-5800

MATTHEWS COMMERCIAL PROPERTIES LLC  
819 Straits Tpke, Suite 3B  
Middlebury, CT 06762  
[matthewscommercial.com](http://matthewscommercial.com)

# FOR SALE or GROUND LEASE

## 659 Middlebury Road, Middlebury, CT

MATTHEWS COMMERCIAL PROPERTIES



MATTHEWS COMMERCIAL PROPERTIES LLC

819 Straits Tpke, Suite 3B

Middlebury, CT 06762

matthewscommercial.com

CONTACT: GERRY MATTHEWS 203-753-5800