

# FOR LEASE

609 Farmington Ave, Hartford, CT

MATTHEWS COMMERCIAL PROPERTIES



## PROPERTY DESCRIPTION

Matthews Commercial Properties is pleased to offer professional office space for lease at 609 Farmington Ave, Hartford, CT. This 1,000 sq ft space features three private offices, perfectly suited for small businesses, professional services, or medical practices. Zoned MX-1, it allows for flexible business uses, making it an excellent choice for a variety of tenants. Conveniently located on Farmington Avenue, this property offers great accessibility and visibility in a highly desirable area of Hartford.

## PROPERTY FEATURES

- Landlord Pays utilities
- Reception Area
- 3 Private Offices
- Close proximity to public transportation
- Ample parking
- Asking \$18/SF = \$1,500/Month

**MATTHEWS COMMERCIAL PROPERTIES**  
Gerry Matthews  
matthewscre@gmail.com  
OFFICE: 203-753-5800  
matthewscommercial.com

# FOR LEASE

## 609 Farmington Ave, Hartford, CT

MATTHEWS COMMERCIAL PROPERTIES

### BUILDING

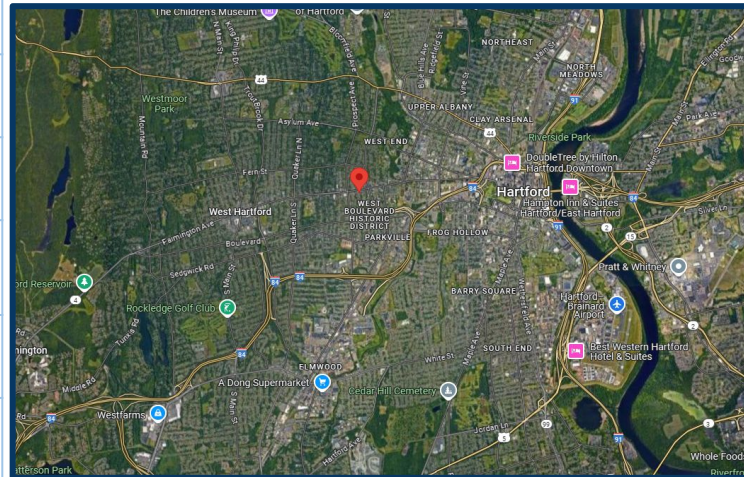
Total SF	17,120 SF +/-
Total Available SF	1,000 SF +/-
Exterior Construction	Brick
Interior Construction	Drywall
Ceiling Height	8'+
Parking	Assigned Parking
Zoning	MX-1

### PROPERTY

Lot Size	0.46 Acres
----------	------------

### MECHANICALS & UTILITIES

Heat Source/ Type	Gas - Hot Water
A/C	100% Central
Electric	Eversource
Sewer	City
Water	City



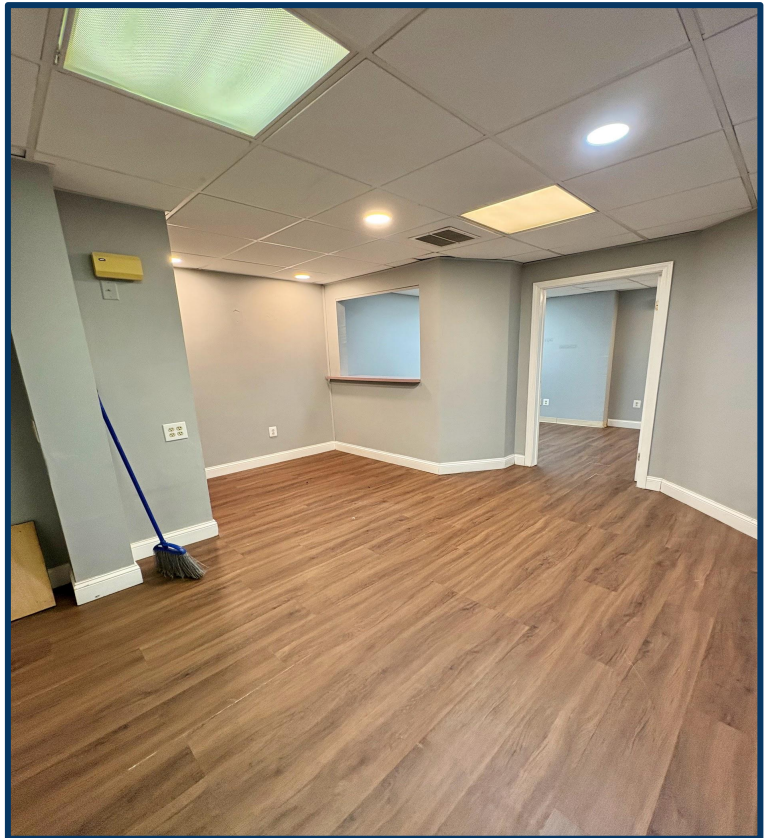
Gerry Matthews 203-753-5800

MATTHEWS COMMERCIAL PROPERTIES LLC  
819 Straits Tpke, Suite 3B  
Middlebury, CT 06762  
[matthewscommercial.com](http://matthewscommercial.com)



# FOR LEASE

## 609 Farmington Ave, Hartford, CT



**Gerry Matthews 203-753-5800**

**MATTHEWS COMMERCIAL PROPERTIES LLC**  
819 Straits Tpke, Suite 3B  
Middlebury, CT 06762  
[matthewscommercial.com](http://matthewscommercial.com)



# FOR LEASE

## 609 Farmington Ave, Hartford, CT



Gerry Matthews 203-753-5800

MATTHEWS COMMERCIAL PROPERTIES LLC  
819 Straits Tpke, Suite 3B  
Middlebury, CT 06762  
[matthewscommercial.com](http://matthewscommercial.com)