

FOR LEASE

1 Sherman Hill Rd., Woodbury, CT

MATTHEWS COMMERCIAL PROPERTIES



PROPERTY DESCRIPTION

Matthews Commercial Properties is pleased to present 1 Sherman Hill Rd., Woodbury CT available for lease. There's a mix of units available that are suitable for a variety of professional and medical office users.

PROPERTY FEATURES

- 1st Floor: 4,402 SF - Former Bank with Drive-Thru - Asking \$7,318.33 Per Month + Utilities
- Suite 2-1: 1,029 SF +/- Asking \$1,710.71 Per Month Including Utilities
- Suite 2-2: 356 SF +/- Asking \$591.85 Per Month Including Utilities
- Suite 2-3: 347 SF +/- Asking \$576.89 Per Month Including Utilities
- Highly Visible Building with Great Signage
- Average Daily Traffic: 13,900 Vehicles on Main St. S. & 5,700 Vehicles on Sherman Hill Rd.
- Extremely Large Parking Lot
- Professional & Local Ownership

LEASE RATE

- \$11.95 PSF + \$8.00 PSF NNN

GERRY D. MATTHEWS
203-753-5800
matthewscre@gmail.com

NOAH D. MATTHEWS
203-721-3337
matthewsnoah@gmail.com

FOR LEASE

1 Sherman Hill Rd., Woodbury, CT



GERRY MATTHEWS 203.753.5800
NOAH MATTHEWS 203.721.3337

MATTHEWS COMMERCIAL PROPERTIES LLC
819 Straits Tpke, Suite 3B
Middlebury, CT 06762
matthewscommercial.com

FOR LEASE

1 Sherman Hill Rd., Woodbury, CT



GERRY MATTHEWS 203.753.5800
NOAH MATTHEWS 203.721.3337

MATTHEWS COMMERCIAL PROPERTIES LLC
819 Straits Tpke, Suite 3B
Middlebury, CT 06762
matthewscommercial.com

FOR LEASE

1 Sherman Hill Rd., Woodbury, CT

MATTHEWS COMMERCIAL PROPERTIES

BUILDING

Total SF	12,524 SF +/-
Total Available SF	6,134 SF +/-
Exterior Construction	Brick / Veneer
Roof	Composite
Interior Construction	Carpet / Drywall
Year Built	1974
Ceiling Height	8'
Parking	Large Parking Lot
Zoning	MQ-A

PROPERTY

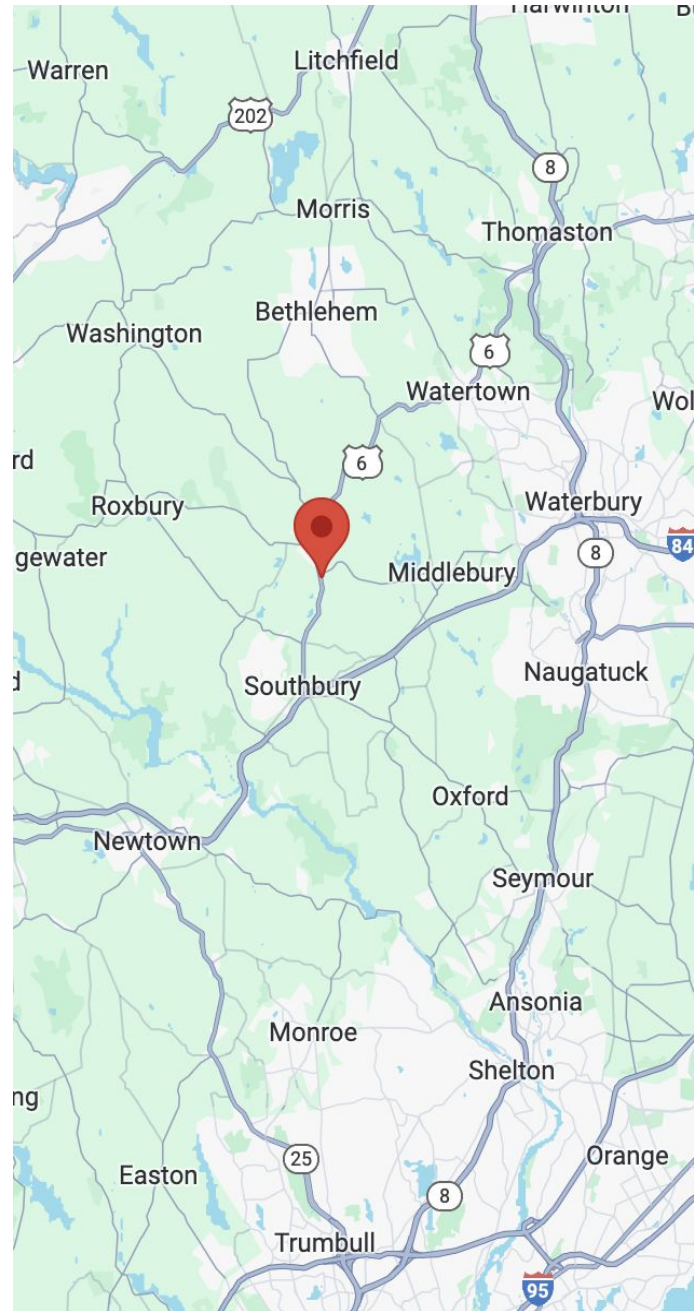
Lot Size	3.53 Acres
----------	------------

MECHANICALS & UTILITIES

Heat Source/ Type	Gas - Forced Air
Electric	Eversource
Sewer	City
Water	City

TAXES

TAXES PSF	\$2.71 PSF
-----------	------------



FOR LEASE

1 Sherman Hill Rd., Woodbury, CT

MATTHEWS COMMERCIAL PROPERTIES

1st Floor - 4,402 SF



MATTHEWS COMMERCIAL PROPERTIES LLC

819 Straits Tpke, Suite 3B

Middlebury, CT 06762

matthewscommercial.com

GERRY MATTHEWS 203.753.5800

NOAH MATTHEWS 203.721.3337

FOR LEASE

1 Sherman Hill Rd., Woodbury, CT

MATTHEWS COMMERCIAL PROPERTIES



GERRY MATTHEWS 203.753.5800
NOAH MATTHEWS 203.721.3337

MATTHEWS COMMERCIAL PROPERTIES LLC
819 Straits Tpke, Suite 3B
Middlebury, CT 06762
matthewscommercial.com

FOR LEASE

1 Sherman Hill Rd., Woodbury, CT

MATTHEWS COMMERCIAL PROPERTIES



GERRY MATTHEWS 203.753.5800
NOAH MATTHEWS 203.721.3337

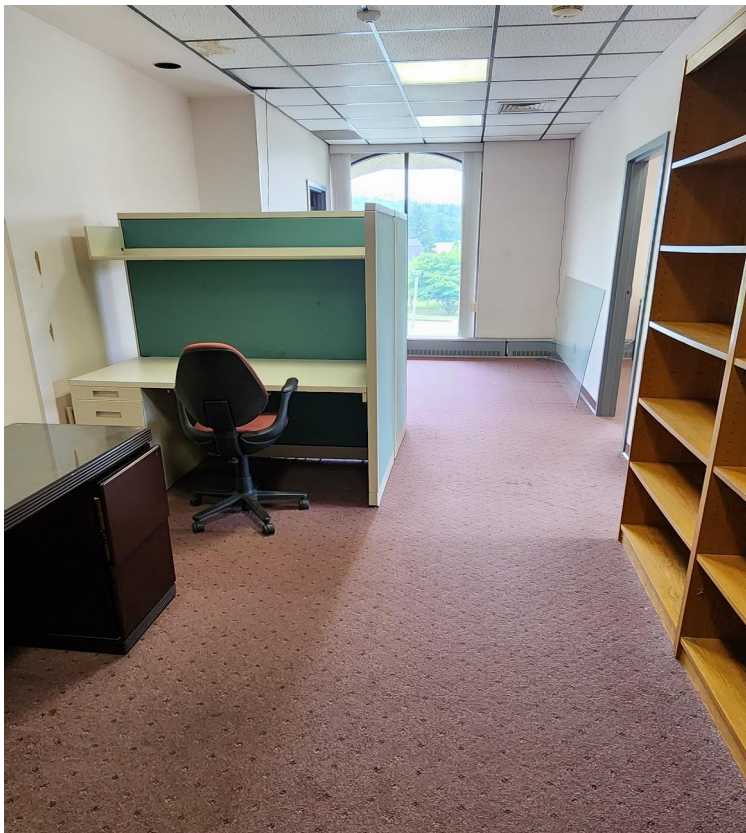
MATTHEWS COMMERCIAL PROPERTIES LLC
819 Straits Tpke, Suite 3B
Middlebury, CT 06762
matthewscommercial.com

FOR LEASE

1 Sherman Hill Rd., Woodbury, CT



Suite 2-1: 1,029 SF



GERRY MATTHEWS 203.753.5800
NOAH MATTHEWS 203.721.3337

MATTHEWS COMMERCIAL PROPERTIES LLC
819 Straits Tpke, Suite 3B
Middlebury, CT 06762
matthewscommercial.com

FOR LEASE

1 Sherman Hill Rd., Woodbury, CT

MATTHEWS COMMERCIAL PROPERTIES

Suite 2-1: 1,029 SF



MATTHEWS COMMERCIAL PROPERTIES LLC

819 Straits Tpke, Suite 3B

Middlebury, CT 06762

matthewscommercial.com

GERRY MATTHEWS 203.753.5800

NOAH MATTHEWS 203.721.3337

FOR LEASE

1 Sherman Hill Rd., Woodbury, CT



Suite 2-2: 356 SF



MATTHEWS COMMERCIAL PROPERTIES LLC

819 Straits Tpke, Suite 3B

Middlebury, CT 06762

matthewscommercial.com

GERRY MATTHEWS 203.753.5800

NOAH MATTHEWS 203.721.3337

FOR LEASE

1 Sherman Hill Rd., Woodbury, CT



Suite 2-3: 347 SF



Common Area Between Suite 2-2 & Suite 2-3

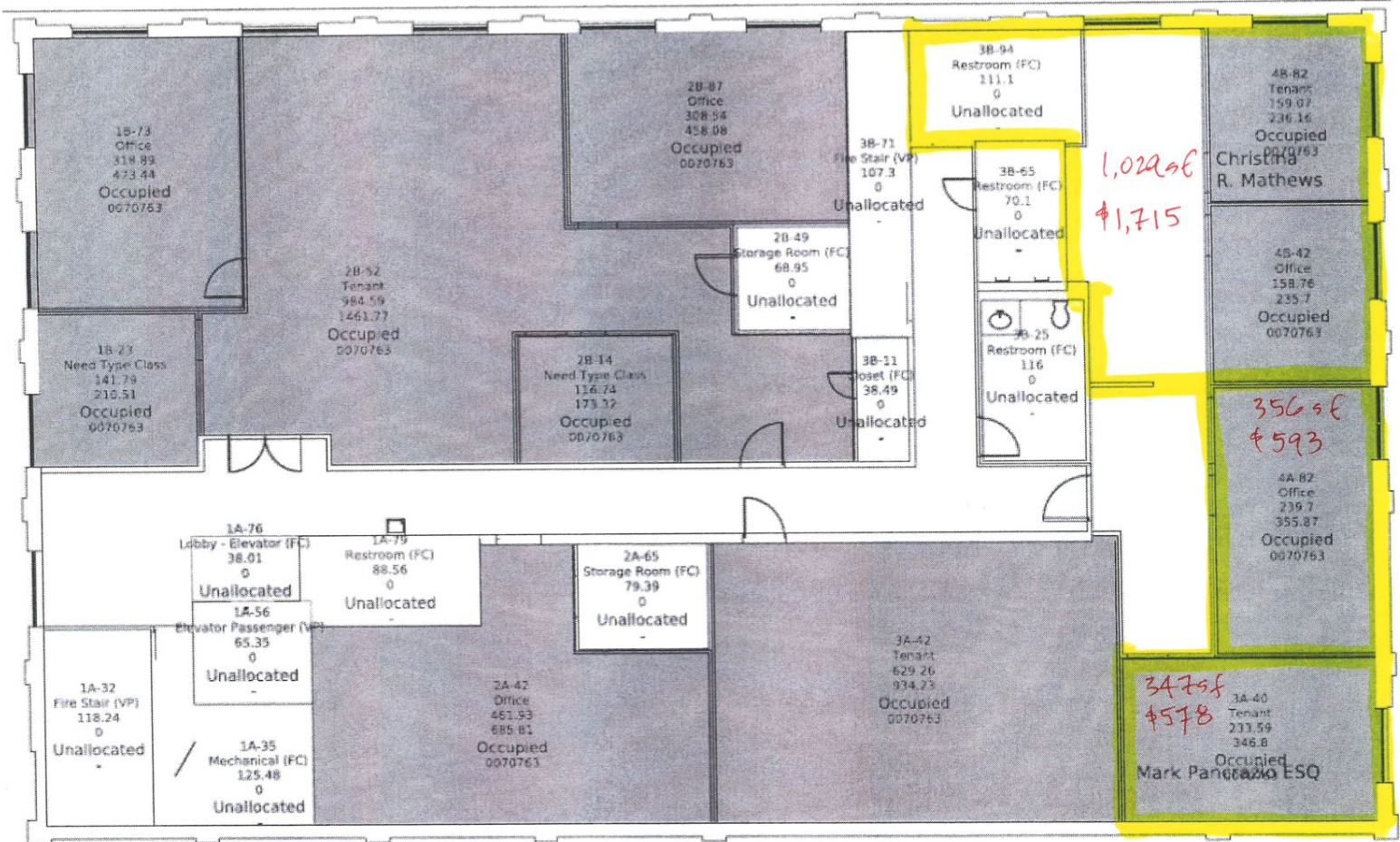


FOR LEASE

1 Sherman Hill Rd., Woodbury, CT

MATTHEWS COMMERCIAL PROPERTIES

2nd Floor



FOR LEASE

1 Sherman Hill Rd., Woodbury, CT

MATTHEWS COMMERCIAL PROPERTIES



GERRY MATTHEWS 203.753.5800
NOAH MATTHEWS 203.721.3337

MATTHEWS COMMERCIAL PROPERTIES LLC
819 Straits Tpke, Suite 3B
Middlebury, CT 06762
matthewscommercial.com